



GAT MONTHLY MEMBERSHIP PROGRESS REPORT

Results as of: 2/29/2024

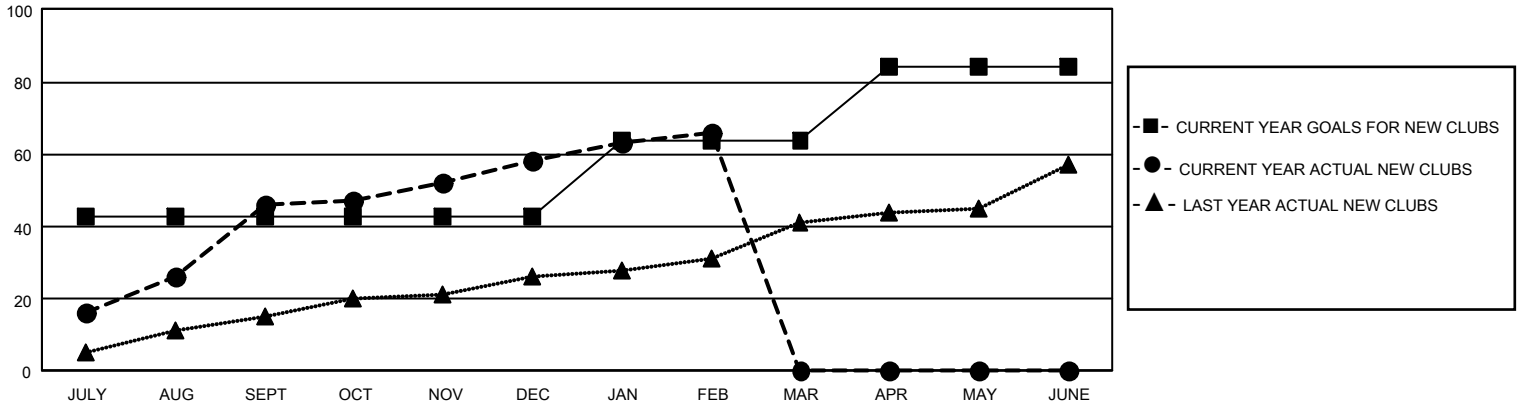
GMT Constitutional Area 6 - I, Group F

REPORT DOES NOT INCLUDE CLUBS IN UNDISTRICTED AREAS.

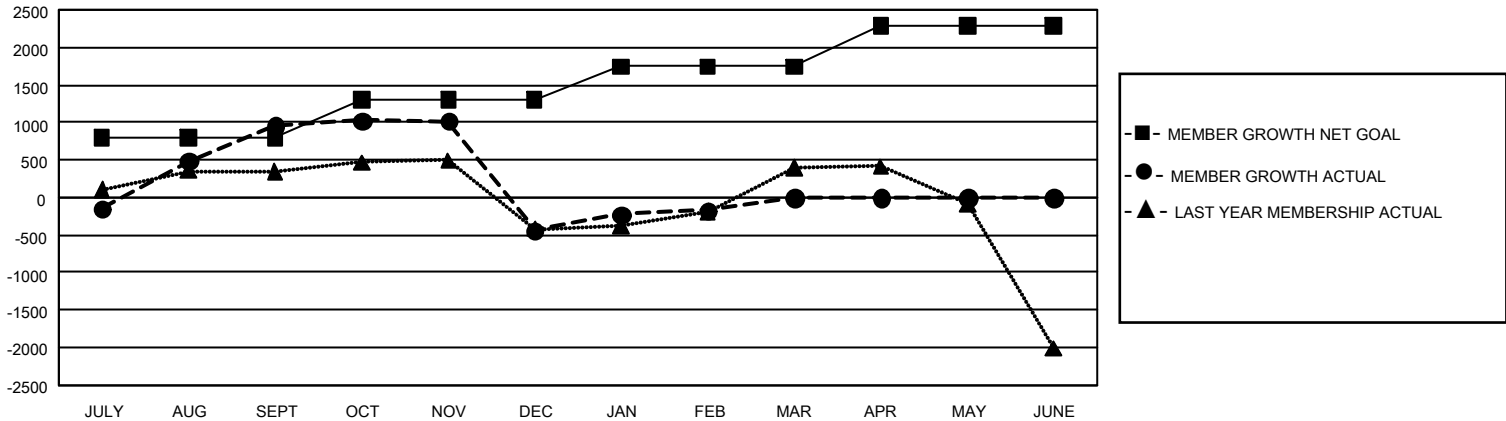
Clubs			
RESULTS FOR 2023-2024			
QUARTER	NEW CLUB GOAL	NEW CLUBS	DROPPED CLUBS
JULY/AUG/SEPT	129	46	9
OCT/NOV/DEC	0	12	32
JAN/FEB/MAR	63	8	12
APR/MAY/JUNE	60	0	0

Members			
RESULTS FOR 2023-2024			
QUARTER	MEMBER GROWTH NET GOAL	MEMBER GROWTH ACTUAL	DROPPED MEMBERS ACTUAL (including transfers)
JULY/AUG/SEPT	790	2,914	1,565
OCT/NOV/DEC	515	1,227	2,484
JAN/FEB/MAR	442	833	409
APR/MAY/JUNE	545	0	0

GOALS AND ACTUAL NEW CLUBS CUMULATIVE



GOALS AND ACTUAL MEMBERS CUMULATIVE



DROPPED CLUBS: 53	598 CLUBS OF 1,198 ADDED 1 OR MORE NEW MEMBERS	<u>GENDER DISTRIBUTION</u>	
		MALE 22,009 (69.92%) FEMALE 9,455 (30.04%) NON BINARY 0 (0.00%) PREFER NOT TO ANSWER 13 (0.04%)	
<u>DROPPED MEMBERS</u>		CLICK HERE FOR CUMULATIVE MEMBERSHIP DATA	TOTAL FAMILY UNIT MEMBERS 16,110
DECEASED 84 CLUB CANCELLED 706 OTHER 3,668 TOTAL 4,458			FAMILY MEMBERS PAYING HALF DUES 9,583